

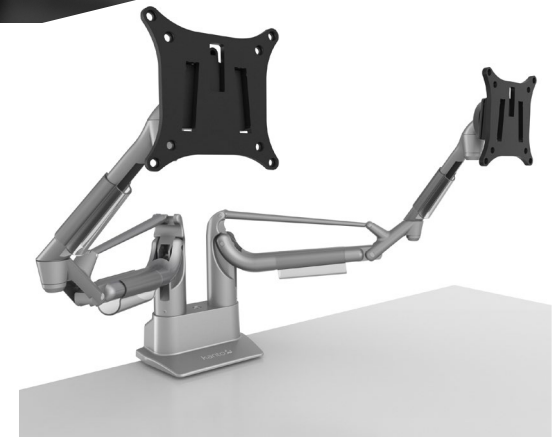
DMS2000

Not your average monitor mount.

Achieving the perfect desktop setup is about striking a balance between style and functionality.

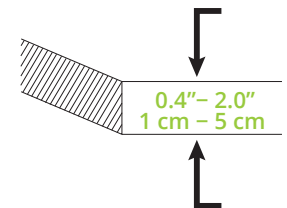
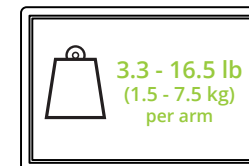
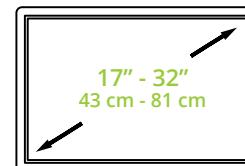
The DMS2000 is designed to do exactly that.

Combining industrial influences with a minimalist design, this dual gas shock monitor mount allows for finger-tip adjustments to be made to the height and orientation of your screens. Raise, tilt, swivel and rotate your monitors on the fly to ensure they're always in an ideal position. The detachable base provides a seamless connection to your desk, while its easy-to-use clamping mechanism can be secured to any ledge or grommet hole up to 2 inches thick. To ensure a clutter-free setup, the DMS2000 also includes cable management clips to conveniently route your cables.

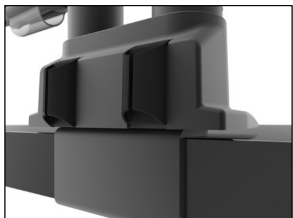


FEATURES & SPECIFICATIONS

- Fits most flat panel computer monitors from 17" to 32"
- Supports two monitors weighing 3.3 lb (1.5 kg) to 16.5 lb (7.5 kg) each
- Accommodates VESA sizes of 75x75 and 100x100
- Accessible tilt mechanism provides a $\pm 25^\circ$ tilt angle
- 360° of swivel
- Provides up to 23.3" (59.3 cm) of reach per arm, depending on screen size and orientation
- 360° monitor rotation for vertical and horizontal screen orientation
- Adjustable tension gas shock system provides 9.5" (24 cm) of fingertip height adjustment
- Integrated cable management
- Aluminum construction with a painted finish
- Installation manual and all monitor mounting hardware for either desk edge or grommet hole installation is included
- Two year manufacturer's warranty
- Shipping box weight: 15.4 lb (7 kg)
- Shipping box dimensions: 19.7" x 13" x 8.7" (50 x 33 x 22 cm)
- Product weight: 12.1 lb (5.5 kg)
- UPC: 800152718071 - DMS2000 (Black)
- UPC: 800152718088 - DMS2000S (Silver)

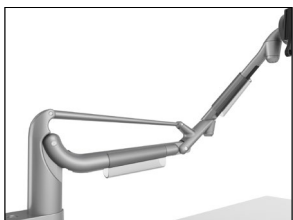


TECHNICAL ILLUSTRATIONS



EASY INSTALLATION

To make installation more manageable, the base of the DMS2000 can be detached from its support arms and secured entirely from the top of your desk.



GAS SHOCK SYSTEM

The two gas shock arms allow for height adjustments to be made with minimal effort. Freely raise or lower your screens to improve line-of-sight and reduce neck strain.



UNLIMITED POSITIONS

The DMS2000 allows for nearly unlimited viewing positions. With four points of rotation on each arm, you can easily swivel your monitors 360°, tilt them 25° up and down, and rotate them into portrait or landscape orientation.



WIDE RANGE OF SUPPORT

Designed for any desk edge or grommet hole up to 2 inches thick, the DMS2000 supports two monitors weighing 3.3 to 16.5 pounds each, with common VESA sizes of 75x75 or 100x100.



CABLE MANAGEMENT

To keep your desktop clutter-free, use the provided cable management clips to conveniently route your cables.

