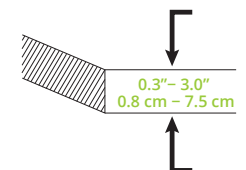
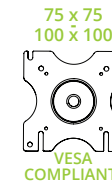
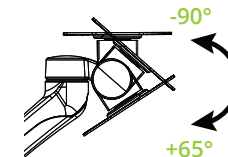
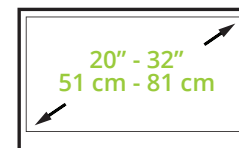


DM2032

Designed for two widescreen monitors measuring up to 32 inches each, the DM2032 desktop monitor mount makes it easy to position your displays exactly where you want them. Its independent articulating arms allow for on-the-fly tilt and swivel adjustments, and let you raise the center of your screens up to 26.8 inches from your desk to ensure eye-level viewing. This versatile monitor mount comes equipped with a clamp mechanism for easy installation on any surface with a grommet hole or ledge up to three inches thick, and includes integrated cable management for a clean and professional setup.

FEATURES & SPECIFICATIONS

- Fits most flat panel computer monitors from 20" to 32"
- Supports two monitors up to 19.8 lb (9 kg) per arm
- Accommodates VESA sizes of 75x75 and 100x100
- Accessible tilt mechanism provides a +65° and -90° viewing angle
- 90° of swivel in either direction, dependent on screen size
- Dual arms provide 18" (45.7 cm) to 20" (50.8 cm) of reach, depending on screen size
- 360° monitor rotation for vertical and horizontal screen orientation
- 16.5" (42 cm) of height adjustment
- Integrated cable management
- Aluminum and steel construction with durable powder coated finish
- Installation manual and all monitor mounting hardware for either desk edge or grommet hole installation is included
- Five year manufacturer's warranty
- Shipping box weight: 10 lb (4.5kg)
- Shipping box dimensions: 9.6" x 22" x 4.8" (24.3 x 55.9 x 12.3 cm)
- Product weight: 8.4 lb (3.8 kg)
- UPC: 800152720081

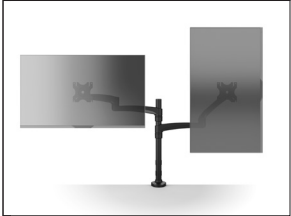


TECHNICAL ILLUSTRATIONS



EASY INSTALLATION

An easy-to-use clamp mechanism safely secures to any desk or table up to three inches thick. For a more discreet look, install the DM2032 within a grommet hole.



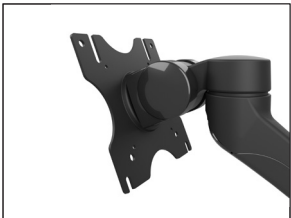
FULL RANGE OF MOTION

Each articulating arm moves independently to allow you to swivel, pan and rotate your monitors to suit your viewing needs.



ADJUSTABLE HEIGHT

Ensure proper line-of-sight by raising the center of each screen up 26.8" from your desk.



155 DEGRESS OF TILT

Make on-the-fly adjustments to the angle of your monitors. Tilt them 65° forward or 90° backwards to improve line-of-sight and reduce glare.



CABLE MANAGEMENT

Featuring detachable plastic covers along both arms, the DM2032 allows you to discreetly route your cables to keep your desktop clutter-free.

